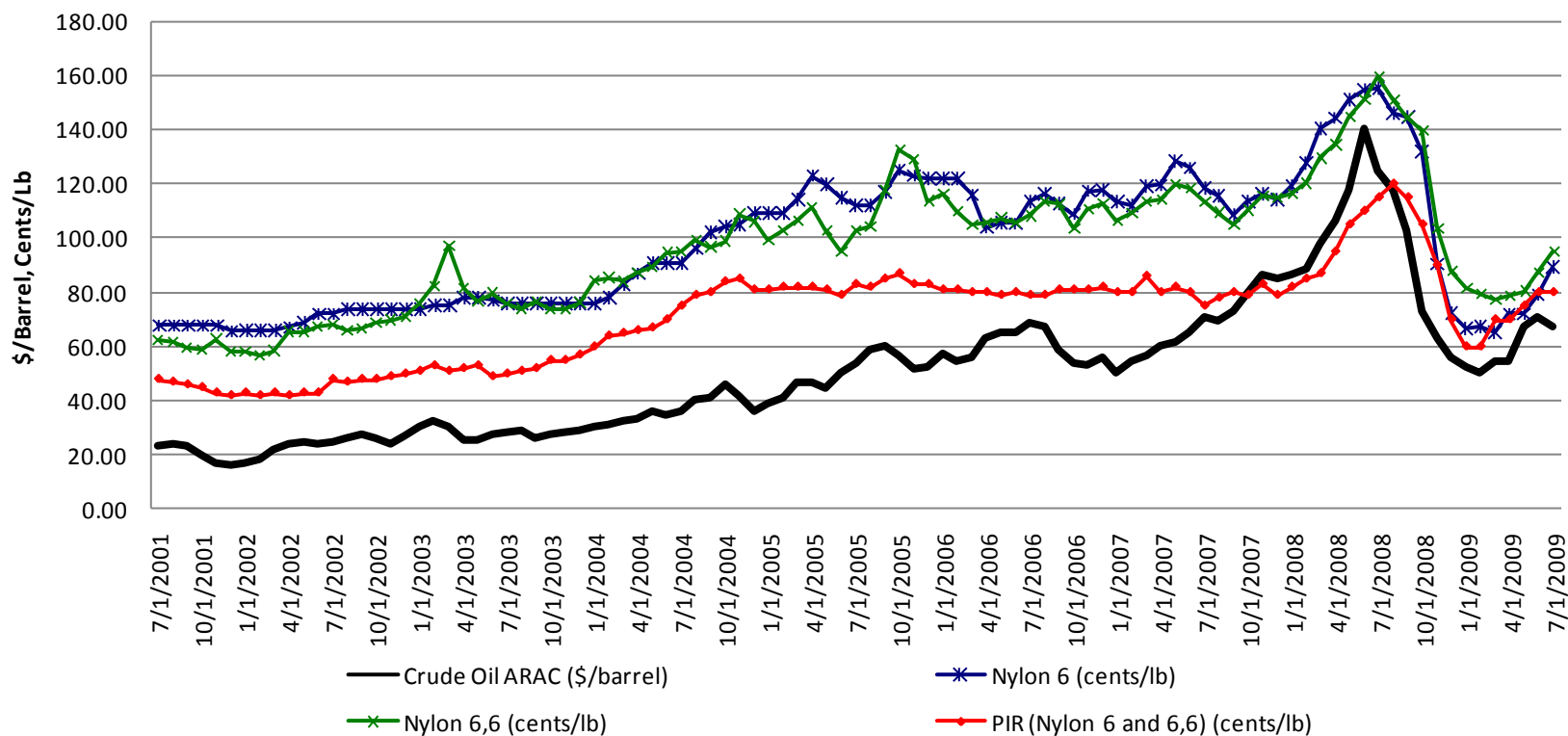


## Crude Oil vs Nylon vs PIR Prices July 2001-July 2009



Sources: Crude Oil ARAC-Bloomberg, Nylon 6 and 66-CMAI Info, PIR-Ave. Price Data.

**Nylon and PIR prices continue to be volatile and track with the cost of oil.**

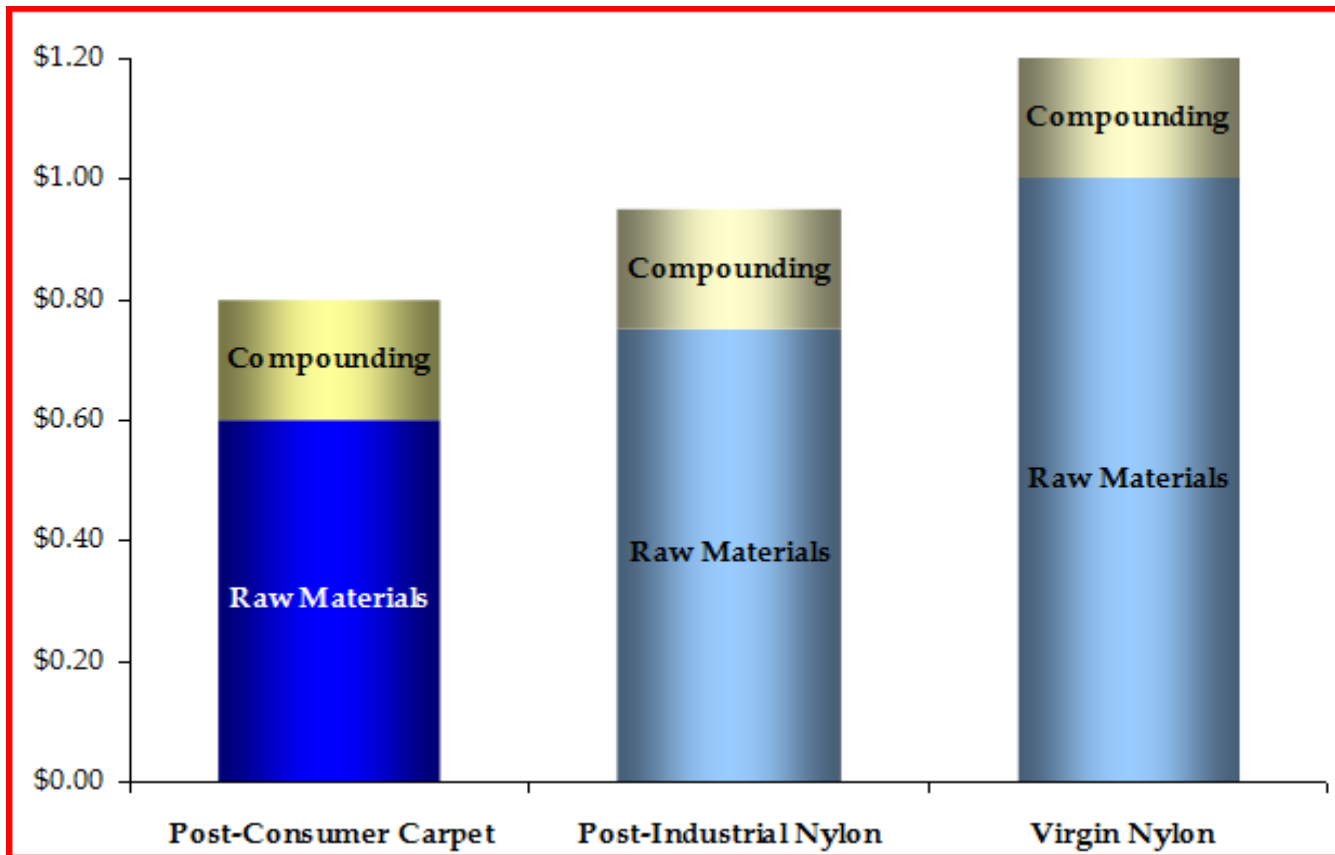
# Carpet Recycling Economics

- **Roughly 5 Billion pounds of carpet goes into landfills each year in the US (Source: CARE statistics)**
- **Landfill fees keep rising**
- **Wellman consumption of post consumer carpet, while a step in the right direction, is a very small percent of the total used carpet.**
- **Our cost for used carpet will stay low**



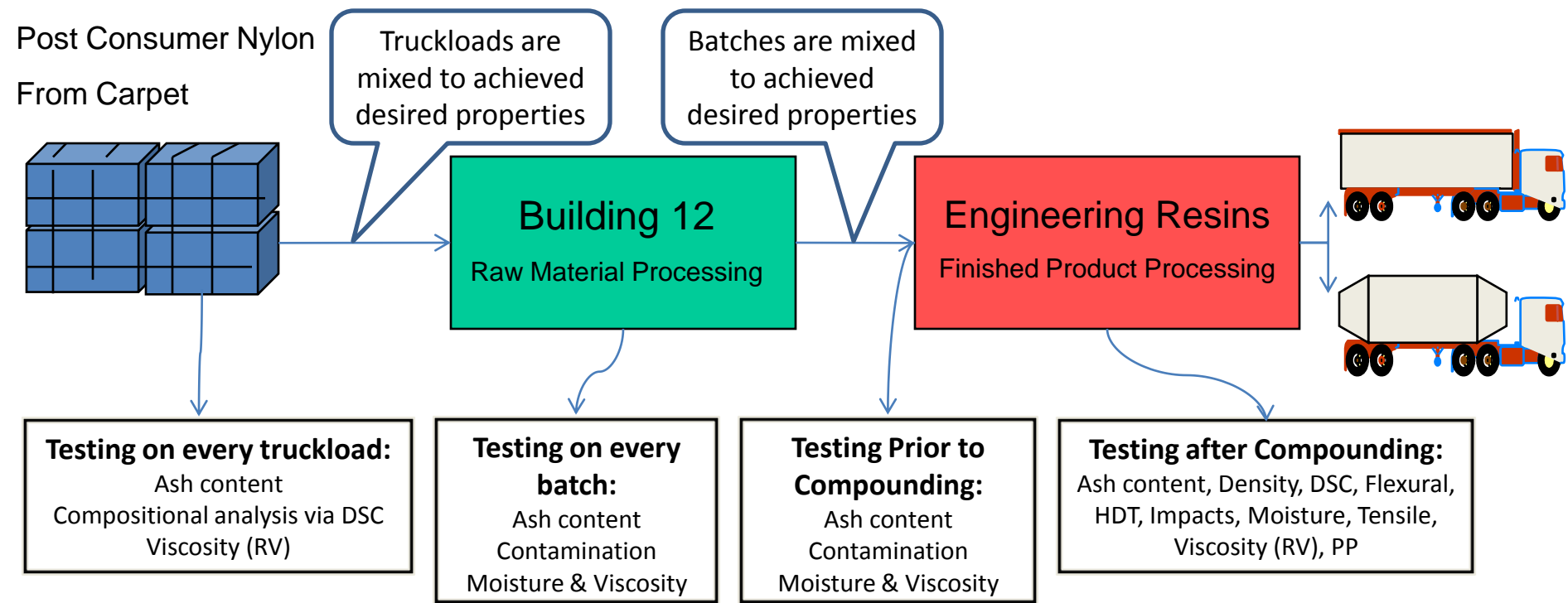
# Typical Mineral Glass Cost /pound

(Direct cost only: does not include fixed, SG&A, or R&D costs)



- Raw Material costs are typically 70-80% of the direct cost
- Most of our Raw Material is carpet, not tied to the price of oil

# Our PCR Nylon Raw Material Flow



## RM to FG Viscosity (dl/g) Comparison

Material	Average	Standard Deviation
Virgin Nylon 66	1.54	0.09
Ecolon 2100-BK1 (100% PCR) – RM	1.50	0.03
Ecolon 2100-BK1 (100% PCR) – FG	1.35	0.05

**Ecolon consistency is better than Virgin Nylon**

# PCR Target Applications

			2009E	2010E				
<i>In Thousands</i>			Total	Q1	Q2	Q3	Q4	Total
NA Total Car Production			3,900	1,238	1,382	1,550	1,654	5,824
NA Total Light Truck Production			4,178	1,307	1,439	1,640	1,791	6,177
NA Total Production			8,078	2,545	2,821	3,190	3,445	12,001
	<b>Lbs/Vehicle</b>	<b>% of Industry Nylon Use</b>						
Electric Cooling Fans <sup>(1)</sup>	1.50	75%	9,088	2,863	3,174	3,589	3,876	13,501
Electric Cooling Fan Shrouds	3.00	25%	6,059	1,909	2,116	2,393	2,584	9,001
Air Cleaner Assembly	1.50	25%	3,029	954	1,058	1,196	1,292	4,500
HVAC Valve Doors	0.25	25%	505	159	176	199	215	750
Engine Cam Covers, Cylinder Head Covers, Valve Covers, Rocker Covers <sup>(2)</sup>	5.25	50%	21,205	6,681	7,405	8,374	9,043	31,503
Cam Cover Baffle Plates <sup>(3)</sup>	0.38	75%	2,272	716	793	897	969	3,375
Headlamp Bulb Assembly <sup>(4)</sup>	0.20	25%	404	127	141	160	172	600
Headlamp Bracket <sup>(5)</sup>	1.00	10%	808	255	282	319	345	1,200
Switch Housings <sup>(6)</sup>	0.60	75%	3,635	1,145	1,269	1,436	1,550	5,400
Switch Buttons <sup>(7)</sup>	0.04	25%	81	25	28	32	34	120
Engine Covers/Beauty Shields	2.50	50%	10,098	3,181	3,526	3,988	4,306	15,001
Radiator Quick Connects <sup>(8)</sup>	0.40	100%	3,231	1,018	1,128	1,276	1,378	4,800
Air Intake Manifolds	8.00	75%	48,468	15,270	16,926	19,140	20,670	72,006
Radiator End Tanks <sup>(9)</sup>	1.50	100%	12,117	3,818	4,232	4,785	5,168	18,002
Door Handles <sup>(10)</sup>	1.50	50%	6,059	1,909	2,116	2,393	2,584	9,001
Shifter Bases	1.00	50%	4,039	1,273	1,411	1,595	1,723	6,001
Grill Opening Reinforcement								
Radiator Support Brackets <sup>(11)</sup>	3.00	30%	7,270	2,291	2,539	2,871	3,101	10,801
<b>Total</b>			<b>138,366</b>	<b>43,593</b>	<b>48,320</b>	<b>54,641</b>	<b>59,009</b>	<b>205,562</b>